

WIOSENNA WYKREŚLANKA - [r]

A	I	D	R	O	Z	D	A	A	O	A	A	O	A	A
O	A	O	A	O	A	O	A	Ż	A	A	O	A	M	R
A	S	A	A	A	A	A	A	U	W	E	R	T	Y	O
S	K	D	F	B	I	E	D	R	O	N	K	A	L	W
A	O	S	D	R	F	G	H	A	J	K	R	L	Z	E
C	W	B	N	A	M	W	Y	W	O	A	E	O	A	R
M	R	Ó	W	K	A	A	A	O	A	Y	T	O	A	O
A	O	O	A	I	T	R	A	W	A	A	A	O	A	Y
W	N	O	A	O	E	A	O	A	O	A	A	O	A	A
A	E	A	A	O	A	O	G	R	O	D	N	I	K	I
Y	K	R	O	K	U	S	Y	A	A	O	A	O	A	O
I	O	A	O	T	F	G	H	O	A	O	L	K	S	A
E	H	K	A	A	O	A	J	I	D	R	O	G	A	Z



ŻURAW



BRATKI



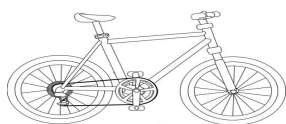
DROZD



DROGA



TRAWA



ROWER



KRET



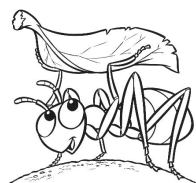
BIEDRONKA



GRABIE



SKOWRONEK



MRÓWKA



OGRODNIK



KROKUSY